

Pressure Test Adapters

Pressure connections for KELLER level transmitters

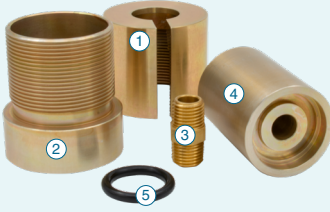


KELLER Pressure offers custom built assemblies for connecting certain KELLER instruments to a pressure source to facilitate calibration and testing. Versions are available to connect the Acculevel/ Levelgage, LevelRat, and Microlevel level transmitters to a pressure calibrator.

Follow the installation steps below for each version. For more information on the installation of KELLER instruments, scan the QR code to be directed to our quick start page or visit <https://us.keller-pressure.com/quickstart>.

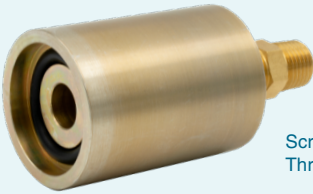


LevelRat Adapter - Parts List



1. Housing, Rear
2. Housing, Front
3. 1/4" NPT Nipple
4. Adapter Face
5. O-Ring, 0.859" x 0.139"

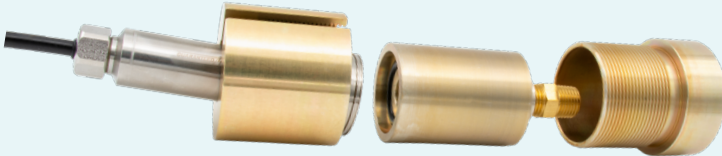
LevelRat adapter assembly - Step 1



Screw 1/4" NPT nipple (3) into adapter face (4) inlet port. Thread sealing tape is recommended.

Insert o-ring (5) into groove in Adapter Face (4).

LevelRat adapter assembly - Step 2



Place LevelRat transmitter into adapter face (4), then place the assembly into Housing, Front (2).

LevelRat adapter assembly - Step 3



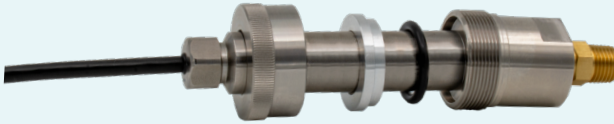
Screw Housing, Rear (1) onto Housing, Front (2) until snug to ensure proper sealing.

Acculevel / Levelgage Adapter - Parts List



1. Housing, Rear
2. Housing, Front
3. 1/4" NPT Nipple
4. Fitting, base - for 21mm
5. O-Ring, 0.859" x 0.139"
6. Compression Sleeve
7. Fitting, Nut - for 21mm

Acculevel / Levelgage assembly - Step 1



Install 1/4" NPT Nipple (3) into Fitting, Base (4) inlet port. Thread sealing tape is recommended.

Place Fitting, Nut (7), Compressions Sleeve (6), and O-Ring (5) onto Acculevel / Levelgage transmitter as shown, then place assembly into Fitting, Base (4). O-ring lubricant is recommended.

Acculevel / Levelgage assembly - Step 2



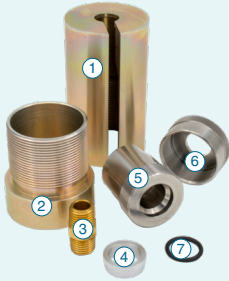
Slide Fitting, Nut (7), Compressions Sleeve (6), and O-Ring (5) together into Fitting, Base (4).

Screw Fitting, Nut (7) onto Fitting, Base (4) tightly, then insert assembly into Housing, Front (2).

Acculevel / Levelgage assembly - Step 3



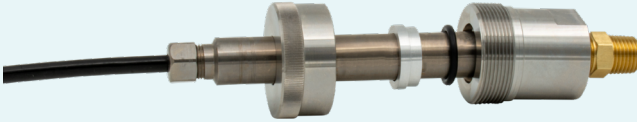
Screw Housing, Rear (1) onto Housing, Front (2) until snug, then back off 1/2 turn to avoid binding.



Microlevel Adapter - Parts List

1. Housing, Rear
2. Housing, Front
3. 1/4" NPT Nipple
4. Compression Sleeve
5. Fitting, Base - for 16mm
6. Fitting, Nut - for 16 mm
7. O-Ring, 0.612" x 0.103"

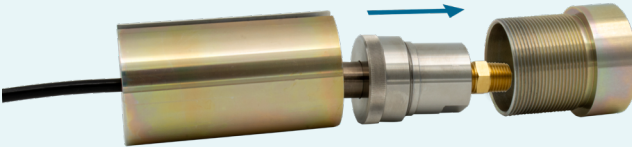
Microlevel assembly - Step 1



Install 1/4" NPT Nipple (3) into Fitting, Base (5) inlet port. Thread sealing tape is recommended.

Place Fitting, Nut (6), Compressions Sleeve (4), and O-Ring (7) onto Microlevel transmitter as shown, then place assembly into Fitting, Base (5). O-ring lubricant is recommended.

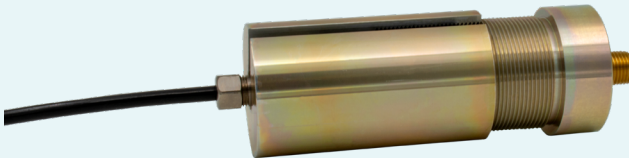
Microlevel assembly - Step 2



Slide Fitting, Nut (6), Compressions Sleeve (4), and O-Ring (7) together into Fitting, Base (5).

Screw Fitting, Nut (6) onto Fitting, Base (5) tightly, then insert assembly into Housing, Front (2).

Microlevel assembly - Step 3



Screw Housing, rear (1) onto Housing, Front (2) until snug, then back off 1/2 turn to avoid binding.